

# Digimatic Indicator ID-H Parameter Setting Software User's Manual

MANUAL No.99MAH023A  
Series No.543

## ID-H Parameter Setting Software English Ver. 1.100A (Parts No.21EZA152A) Copyright (C) 2006 Mitutoyo Corporation. All rights reserved.

Read this User's Manual thoroughly before operating the instrument.  
After reading, retain it close at hand for future reference.

Product ID No.	3358312
----------------	---------

### 1. File list

File name	Contents
ID-H_21EZA152A_1.100.exe	Parameter setting software(English)
ID-H_21EZA152D_1.100.exe	Parameter setting software(German)
ID-H_21EZA152S_1.100.exe	Parameter setting software(Spanish)
Readme.txt	Agreement / User's Manual
Readme.pdf	
CD_label.jpg	Data of label for CD-ROM

### 2. Operating Environments

OS Windows 2000/XP  
Program Visual Basic 6.0 Runtime Set

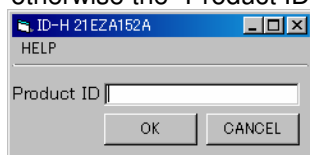
Visual Basic 6.0 Runtime software is required to run this software. Visual Basic 6.0 Runtime software is free software. Please, download from web site as needed.

Windows, Visual Basic is a registered trademark of Microsoft Corporation. Other corporate and product names that appear in this manual are generally their trademarks or registered trademarks.

### 3. Starting the Application

Start the software after saving the "ID-H\_21EZA152A\_1.000.exe", "ID-H\_21EZA152D\_1.000.exe" or "ID-H\_21EZA152S\_1.000.exe" from CD-ROM into the local drive. Start the software after switching the ID-H I/O format to RS-232, referring to the ID-H User's Manual (99MAH016B).

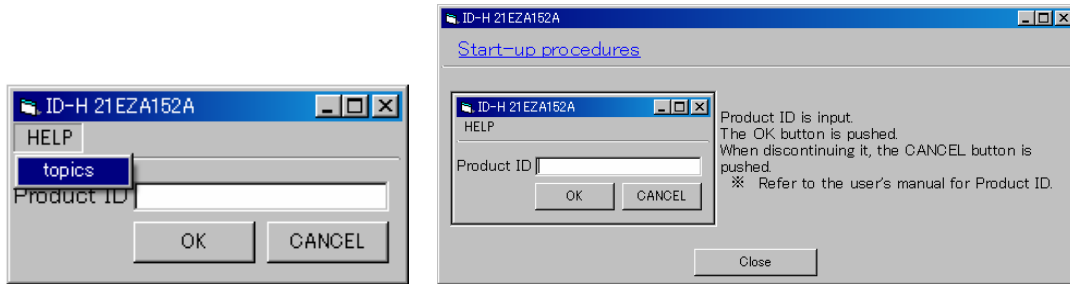
- (1) Upon starting the application the system will communicate with the display unit to load the settings. When the system has loaded the settings, the Basic Setup window opens. However, if the application is started for the first time, the system requires entry of the Product ID. Enter the above Product ID number. Then, a file "IDH\_Pass.dat" will be created in the same folder as this software. Do not delete this file otherwise the "Product ID" input will be required when starting the software.



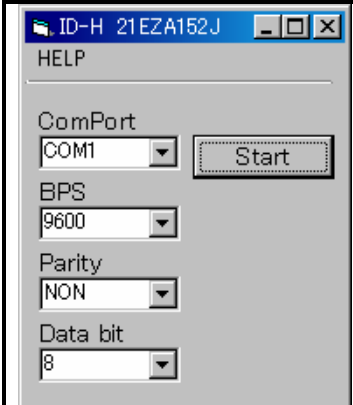
# Digimatic Indicator ID-H Parameter Setting Software User's Manual

MANUAL No.99MAH023A  
Series No.543

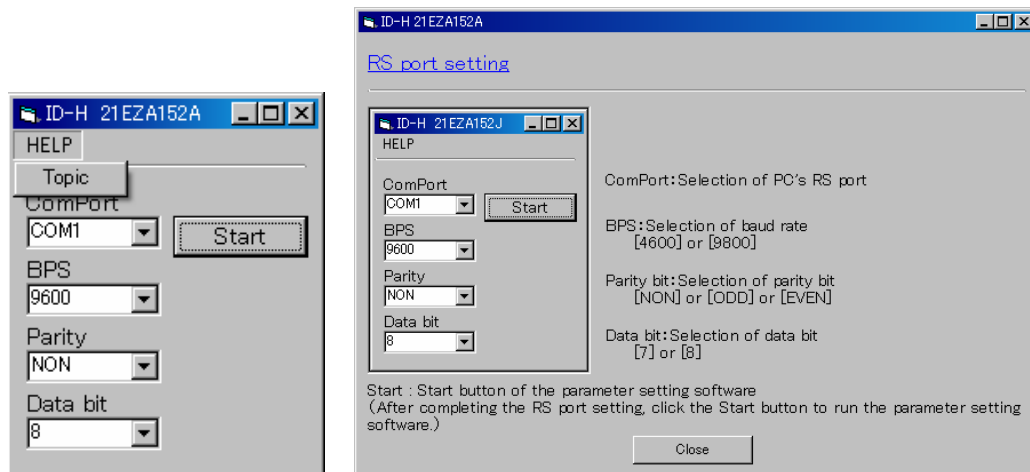
Click the "HELP" button at left upper side of window, select "topics" to show the procedures.



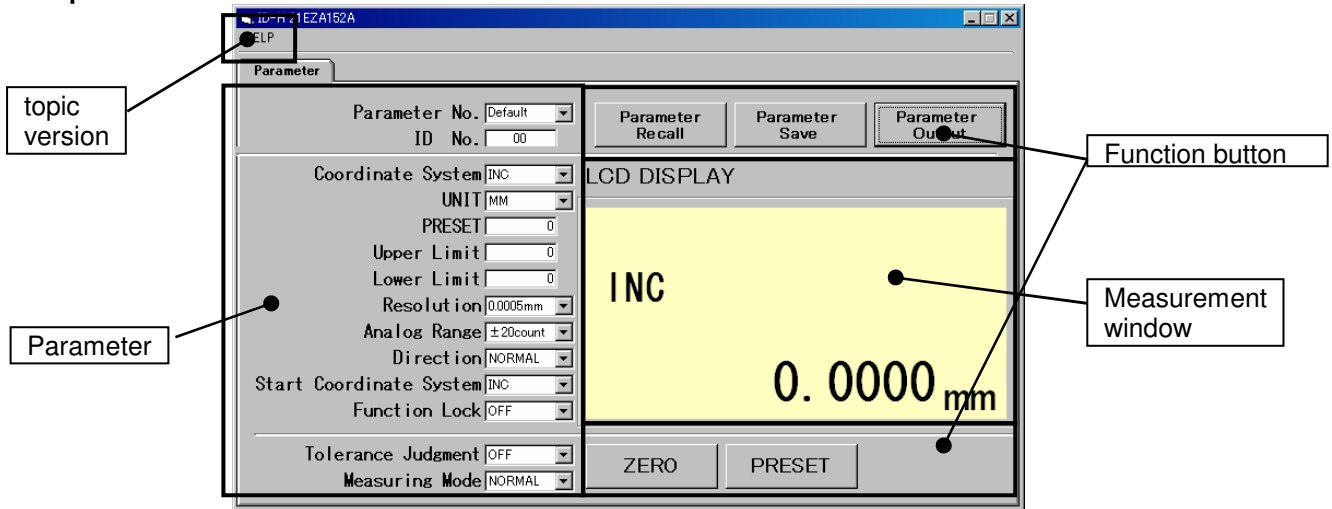
- (2) RS port setting window opens when starting the program. Select the following items according to PC and ID-H and click the "Start" button to start the software.

		ComPort	Selection of PC's RS port
		BPS	Selection of baud rate (9600 / 4800)
		Parity bit	Selection of parity bit (NON / ODD / EVEN)
		Data bit	Selection of data bit (7 / 8)

Click the "HELP" button at left upper side of window, select "topics" to show the procedures.



**4. Explanation of screen**



The screen above is displayed and the file "IDH.dat" will be created in the same folder. Do not delete this file otherwise the saved parameter will be deleted.

**4.1. Parameter setting**

Set parameter and measurement mode for ID-H using the software.

Setting item	Contents
Parameter No.	Selection of parameter to be set (1 / 2 / 3 / Default)
ID No.	Entering the ID-H's ID number.
Coordinate System	Selection of coordinate system (INC / PRESET)
UNIT	Selection of unit (inch / mm, Only for inch spec.)
PRESET	Setting of preset value ※
Upper Limit	Setting of upper limit value ※
Lower Limit	Setting of lower limit value ※
Resolution	Selection of display resolution (0.0005mm / 0.001mm / .00002in / .00005in / .0001in)
Analog Range	Selection of analog bar resolution/range (±20 count / ±40 count / ±100 count / ±200 count / ±400 count / AFS / AFL) AFS: ±40 mm(=2"), AFL:±80 mm(=4")
Direction	Selection of counting direction (NORMAL / REV)
Start Coordinate System	Selection of initial coordinate system when starting up the system (INC / FREE)
Function Lock	Alternation of function lock ON/OFF
Tolerance Judgment	Alternation of tolerance judgment ON/OFF
Measuring Mode	Selection of measuring mode (NOMAL / TIR / MAX / MIN)

※ This software uses the period (.) as decimal placeholder. To input the preset value, upper and lower limits, set the period (.) for decimal placeholder and the comma (,) for thousands separator in the Regional Settings option in Windows Control Panel, and input them with adequate symbol. And, Please do not input thousands separator.

# Digimatic Indicator ID-H Parameter Setting Software User's Manual

MANUAL No.99MAH023A  
Series No.543

## 4.2. Function button

The function buttons enable to output zero-set command and to send setting parameter to ID-H.

Function button	Contents
Parameter Recall	Recall the registered parameter settings corresponded to the selection of "Parameter No."
Parameter Save	Save the displayed parameter settings under the "Parameter No." selected.
Parameter Output	Output the RS command corresponded to the contents of parameter settings to ID-H. (Refer to the ID-H's User's Manual for detail information of data command.)
ZERO	Output Zero-set RS command (CR**CRLF) to ID-H to zeroset it. After transmitting the command, the display value of ID-H is obtained and the PC display is refreshed with it.
PRESET	Output the preset value set on "PRESET" to ID-H to preset it. After transmitting the command, the display value of ID-H is obtained and the PC display is refreshed with it.

## 4.3. Measurement Window

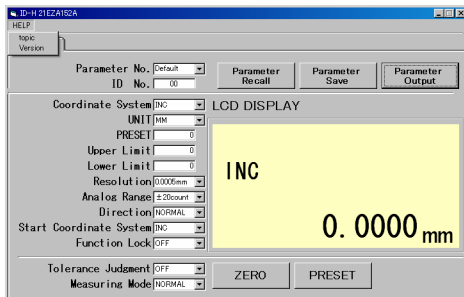
This window displays the indicated value on LCD of ID-H.

The background color of this screen changes along with the state of the communication and tolerance judgement of ID-H.

Background color	State
Purple	The communication is not normally done. Confirm the connection of ID-H and PC. (Cable, ID-H I/O format, Setting of PC's RS port.)
Yellow	Normal communication. Tolerance judgement OFF.
Green	Tolerance judgement ON. OK judgement.
RED	Tolerance judgement ON. $\pm$ NG judgement.

## 4.4. HELP

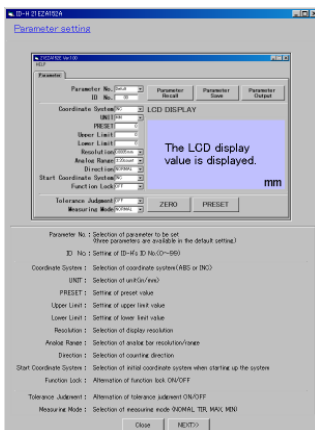
Click the "HELP" button at left upper side of window, select "topic" or "Version" to show the procedures or version information.



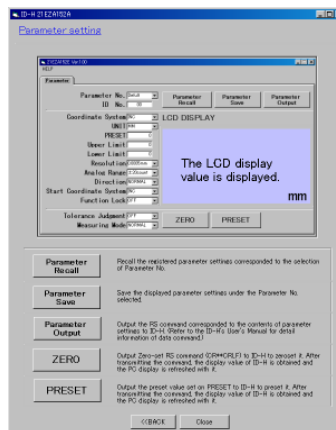
### Version information



### Operating procedure (page 1)

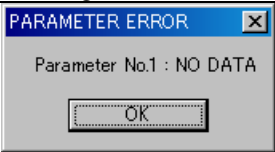
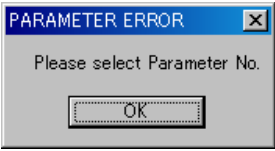

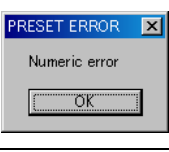

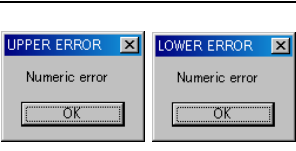


### Operating procedure (page 2)



#### 4.5. Error Message

The following error messages are displayed on the measurement screen when abnormality is caused by the operation of this software or the communication with ID-H. Please do each action to each error message.

Message	Definition	Action
	Parameter Recall error Data is not saved in selected Parameter No..	Input each parameter to corresponding parameter No., and save parameter.
	Parameter Save / Recall error <ul style="list-style-type: none"> <li>Set parameter cannot be saved in parameter No. "Default".</li> <li>Parameter No. has not been selected.</li> </ul>	<ul style="list-style-type: none"> <li>Select parameter No. 1 or 2 or 3 and save parameter.</li> <li>Select parameter No. 1 or 2 or 3 or Default.</li> </ul>
	ID No. input error ID No. was input three digits.	Input ID No. of two digits.
	Preset value input error Preset value that exceeds the number of digits that can be displayed was input.	<ul style="list-style-type: none"> <li>Input the preset values of the number or less of digits that can be displayed.</li> <li>Reduce the resolution.</li> </ul>
	Upper or lower limit value setting error The limit values are set so as to be an upper limit value < a lower limit value.	Set tolerance limit values so as to be an upper limit value > a lower limit value.
	Upper and lower limit value input error Tolerance limit value that exceeds the number of digits that can be displayed was input.	<ul style="list-style-type: none"> <li>Input the tolerance limit values of the number or less of digits that can be displayed.</li> <li>Reduce the resolution.</li> </ul>

If any failure occurs to the ID-H, an error message is displayed on ID-H's LCD display and Measurement window. Refer to the ID-H User's Manual with regard to the error and the countermeasure.